



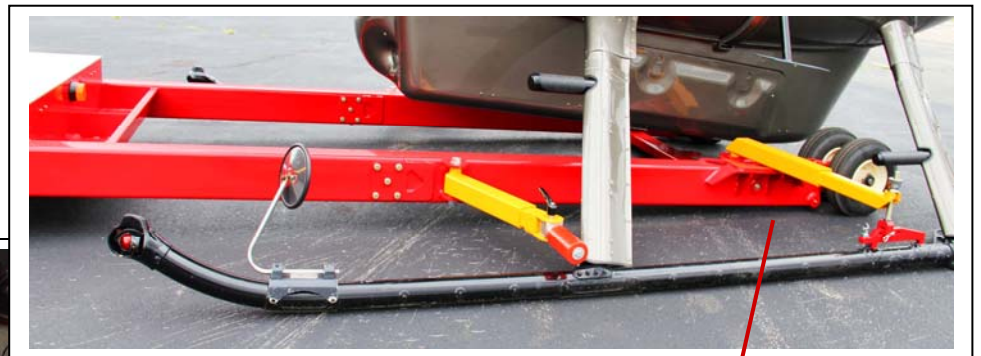
Wheel Pins  
attachment position



**Introduction:**

The Heli-Carrier is a device that kneels down to slide under the helicopter belly up to the attachment position. In order to easily verify compatibility when the unit is in a kneeling position, we have indicated within this instruction the applicable resulting dimensions.

In order to easily verify compatibility of this helicopter carrier, we recommend using a large cardboard and cut it to match the overall dimensions of a specific rectangle. Then simply slide this rectangle cardboard under the belly, from helicopter nose to one foot (30cm) aft of rear attachment pins usually used for installation of this helicopter's wheels.



Kneeled position



Open space on top

Figure 1 :

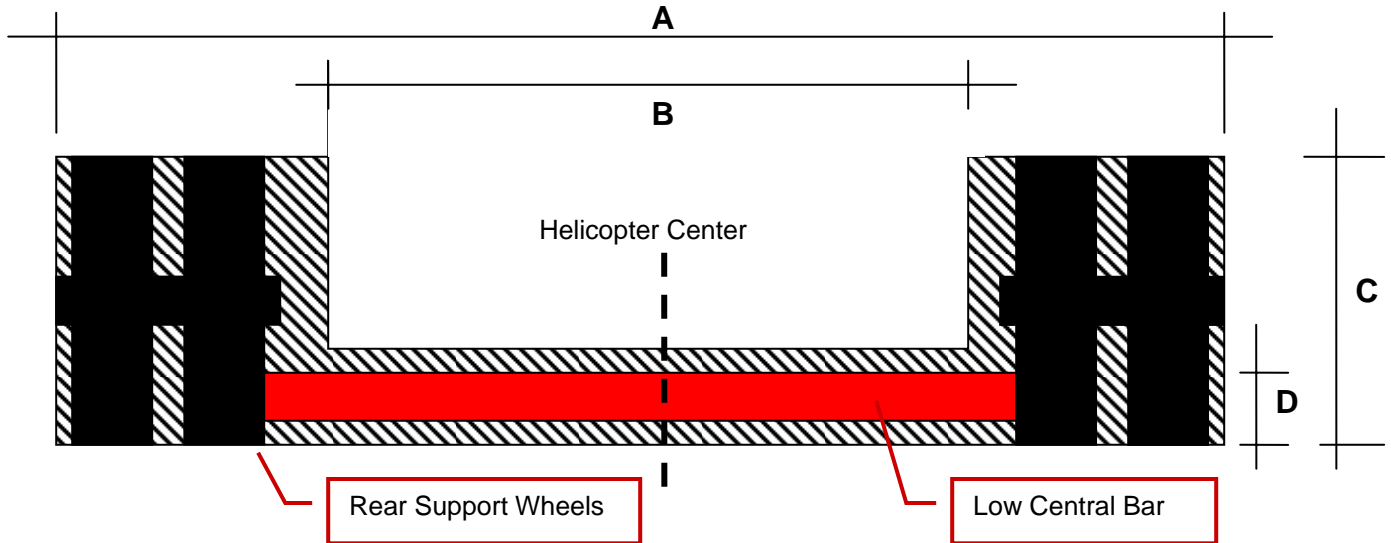
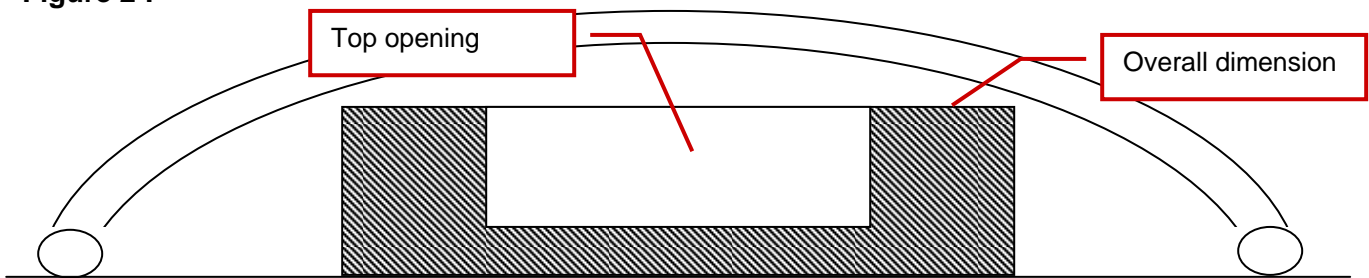


Figure 2 :



The above typical sketch demonstrates a cardboard cut to the Heli-Carrier's specific rectangle model. The blank smaller rectangle on top of the base one demonstrates the open space available for antennas and accessories. See dimension tables below as well as Figure 1.

Overall Size of Carrier (i.e. Large Cardboard Rectangle Size)			
	V1020	V1022	V1030
A	57.75" (1467mm)	56" (1422mm)	67" (1702mm)
C	12.5" (318mm)	12" (305mm)	12" (305mm)

Open Space on top of kneeled Carrier (i.e. Smaller Rectangle Size cut out of large rectangle at center top) :			
	V1020	V1022	V1030
B	34" (864mm)	31.3" (800mm)	38.5" (978mm)
D	3" (76mm)	3" (76mm)	3" (76mm)