

Options

OPS: Option Power Supply (APU kit)

This Popular Option allows operators to use the tow cart as an Auxiliary Power Unit (APU) in addition to towing.



For V201kit includes basket for cables as shown left

Kit includes:
High quality cables
& Safety switch



OWC: Option Winter Cables

These winter cables provide extra traction on ice & snow. They are designed to prevent damage to hangar floor while maintaining sufficient grip on ice.



Kit includes:
4 cable rings.

Each wide traction wheel requires 2 rings.

OLS: Option Lighting System

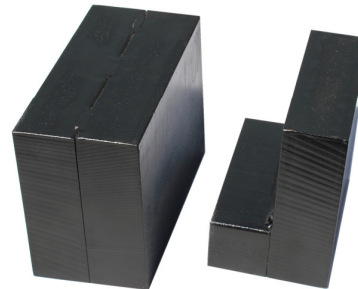
This Option allows operators to use the tow cart outside regular hours.

Kit includes 2 powerful lights, each with 8 LEDs, (3w), 1750 LM.



OWK: Option Weight Kit

Weight blocks to increase traction on V201. Provides extra traction for tail heavy helicopters. Much appreciated for winter operations. These blocks are inserted into tow cart cabinet and fit to maintain streamline look.



V201:
146 lbs/66 kg

Kit includes 2 blocs of each shown

Attachments - Standard

AT44

For:
Robinsons



Helicopter ball slides into the attachment block. Sliding-in aluminum bar locks ball into place. The AT44 attachment block is very safe. Should the operator not aim correctly, the ball hits the wide block first, thus preventing damage to helicopter belly.

AT45 / AT46 Universal

For:
Most helicopter models

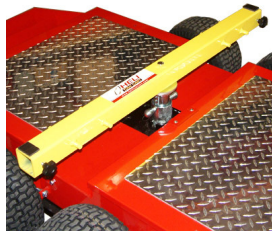


AT45 is the Yellow system shown above

The AT45 attachment system adapts to all skid tube diameters and shapes and holds helicopter tightly. It comprises of a yellow central support bar, a pair of 45 degree adjustable tip bars, complete with cranking system, cups and straps. Tips are designed to slid in/out of the central bar, thus allowing for easy adjustment should the tow cart be positioned off center. The AT46 is a low version of this unit to fit the low V610.

Attachments - Specific needs

AT45 / AT46 Accessories



Regular Central bar

Cups:

ATCups-S Small for Enstroms
 ATCups-M Medium for most heli. (Standard)
 ATCups-L Large for Bell205, B212, B412
 ATCups-SL Slanted for EC120 & EC130

Central Bars:

AT45 Extra Bar-REG Regular Bar :
 40"/102cm (Standard)

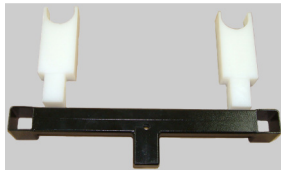
AT45 Extra Bar-XL Extra Long Bar :
 60"/152cm for Bell205, B212, B412

Large Med Small

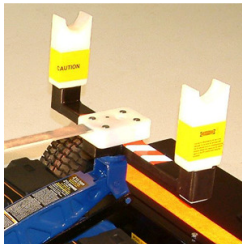


Slanted

AT44R



AT44R



AT44R shown with AT44

For R44 on permanent floats. The AT44R is an attachment device designed to provide help jacking the R44 from the rear. The AT44 can be set up on top of the AT44R so that only end blocks need to be taken off when towing from the front of the helicopter (see picture).

****Important:** This device can only be used with the V204 tow cart model. This device is not designed for towing the helicopter.

AT47

For:
 EC135, 145, BK117
 *i.e. helicopters that require
 attachment to vertical struts



The AT47 allows a fast set-up, adapts to most skid tube diameters and shapes and holds the helicopter tightly. The system is actually triple axe to match specific helicopter needs. It comprises of the yellow central support bar, a pair of inverted 45 degree adjustable angle bars, complete with cranking system, cups and straps.

AT120

For:
 EC120



AT120 block attaches to the central bar under the cabin. This popular block is a favorite with EC120 operators. The unit is locked by tightening with a clamping system.

Tow Hook for PLANES

OATL for
 V602, V610, V614, V650



OAT for
 V90., V201, V204,



Tow carts can be used to tow planes. Tow hooks were developed for this application. The operator hooks his own aircraft tow bar (not included) to the tow cart hook for easy ground handling.

Tow balls and pins not included.